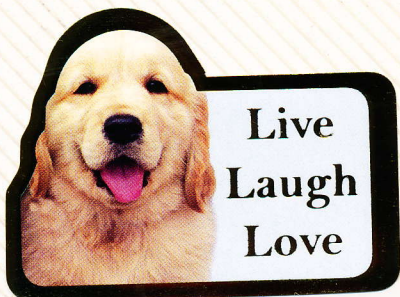




1960-61



NEW YRS. EVE
1961



TOM MARKUS, AL LUCAS, BARB O'DONNELL,
RUSTY MCCIURG, ALBERTA SORM,
IVANKA MIKIC & KARL HESSELBEIN



NEW YRS. EVE
1960-61



IVANKA & KARL & CATHY
1960

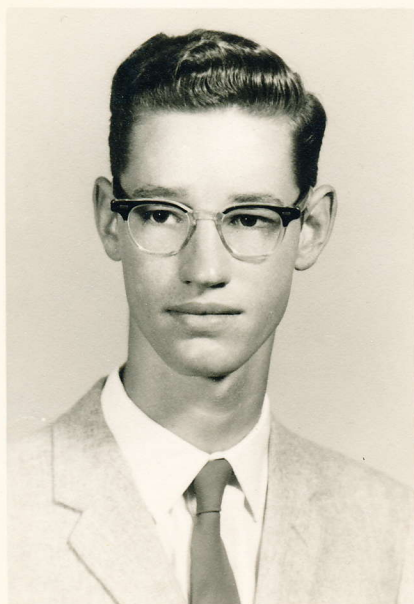
LOVED ALL THOSE -
PARTIES





TOM

1959

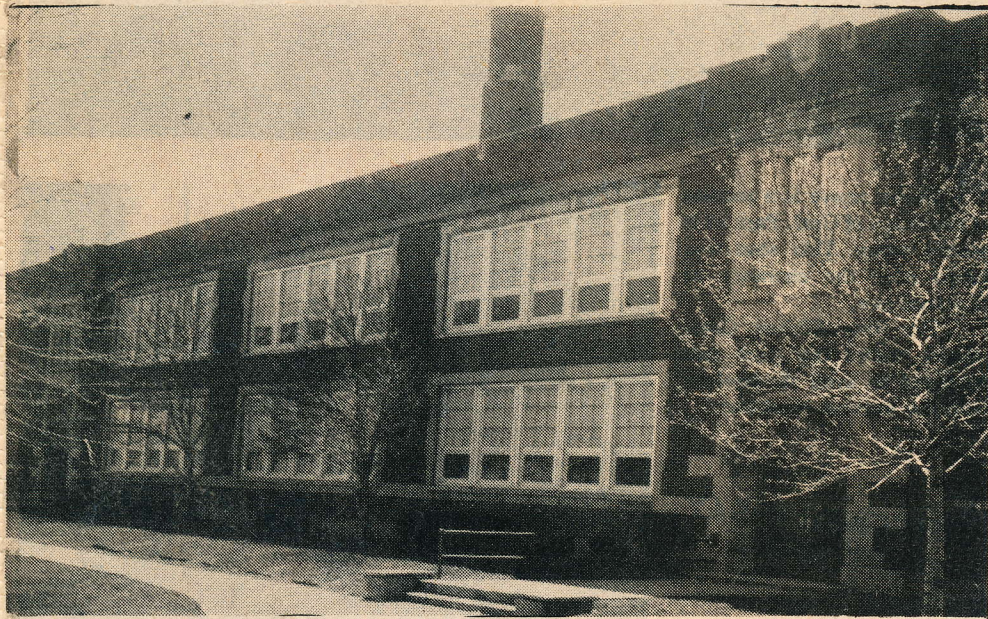


U-B booster



HUMILITY OF MARY SISTER BARBARA O'DONNELL, teacher, Mount Pleasant Catholic (Elementary Education Center): "The U-B is regular reading for me because it is a source of communication and education about parish activities, diocesan concerns, national interests and issues affecting us globally. The U-B is a way for the Church of Cleveland to be enriched in faith, informed of needs and encouraged to respond in action."

U-B (Universe Bulletin)

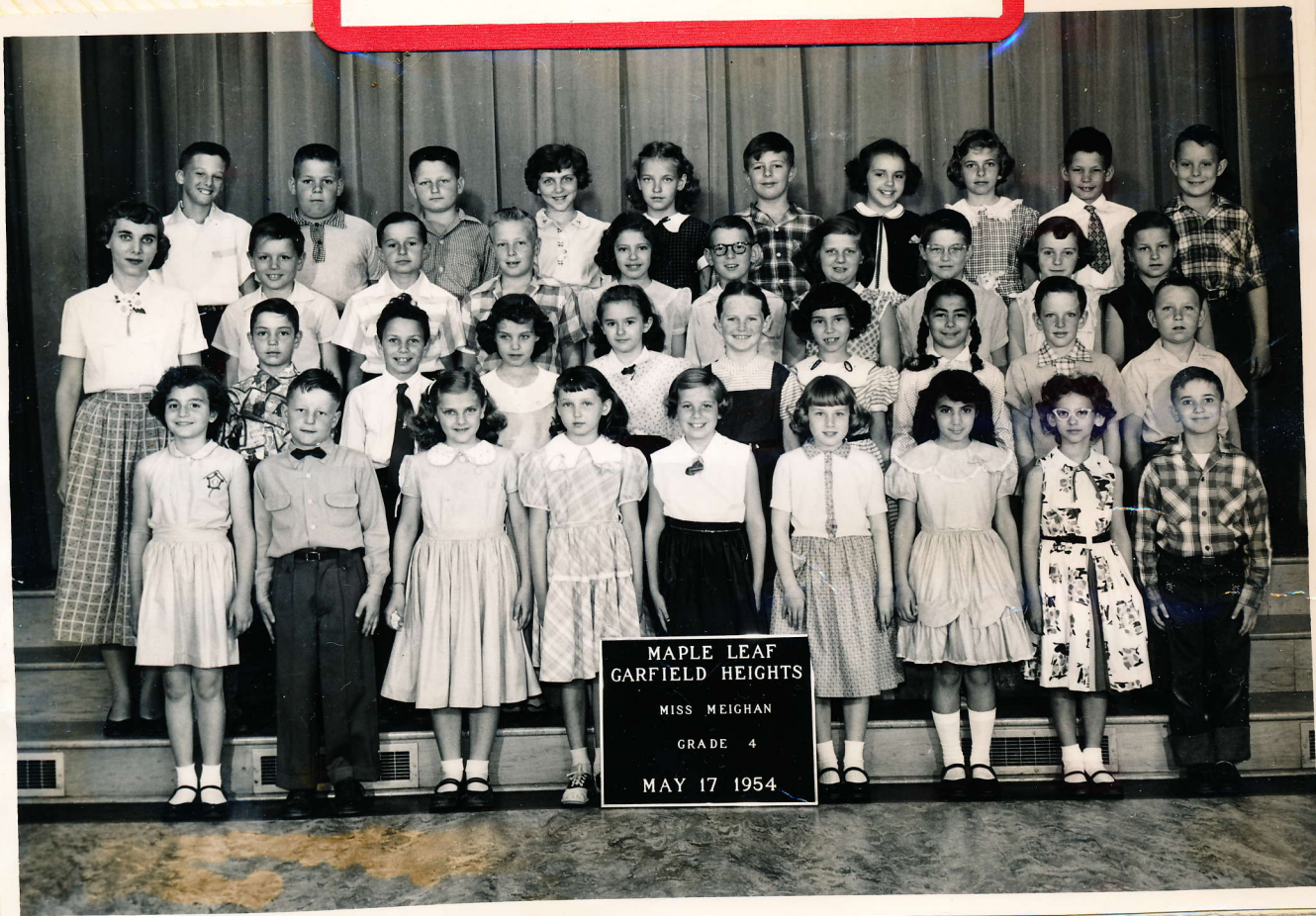


MAPLE LEAF SCHOOL



Miss Edelman 7th gr.
↕
Mrs. HENRY 1957

CAN YOU FIND
YOURSELF?



SCHOOL DAYS 1954-55
MAPLE LEAF



SCHOOL DAYS 1954-55
MAPLE LEAF



SCHOOL DAYS 1954-55
MAPLE LEAF



SCHOOL DAYS 1955-56
MAPLE LEAF



SCHOOL DAYS 1955-56
MAPLE LEAF



SCHOOL DAYS 1955-56
MAPLE LEAF



WHERE ARE
YOU?



SCHOOL DAYS 1957-58
MAPLE LEAF



SCHOOL DAYS 1955-56
MAPLE LEAF



SCHOOL DAYS 19
MAPLE LEAF



SCHOOL DAYS 1955-56
MAPLE LEAF



SCHOOL DAYS 1957-58
MAPLE LEAF



SCHOOL DAYS 1957-58
MAPLE LEAF



SCHOOL DAYS 1957-58
MAPLE LEAF



GARFIELD HTS.
HIGH 1959-60



SCHOOL DAYS 1956-57
MAPLE LEAF



SCHOOL DAYS 1956-57
MAPLE LEAF



SCHOOL DAYS 1956-57
MAPLE LEAF



SCHOOL DAYS 1956-57
MAPLE LEAF



SCHOOL DAYS 1956-57
MAPLE LEAF

KATHY WOLF 1955



JOANIE 1955



KATHY W. ELAINE V. Coretta, Janice J.
GWEN G. JOANIE O. & SHARON J. in
the back.



1954





OCT. 1954



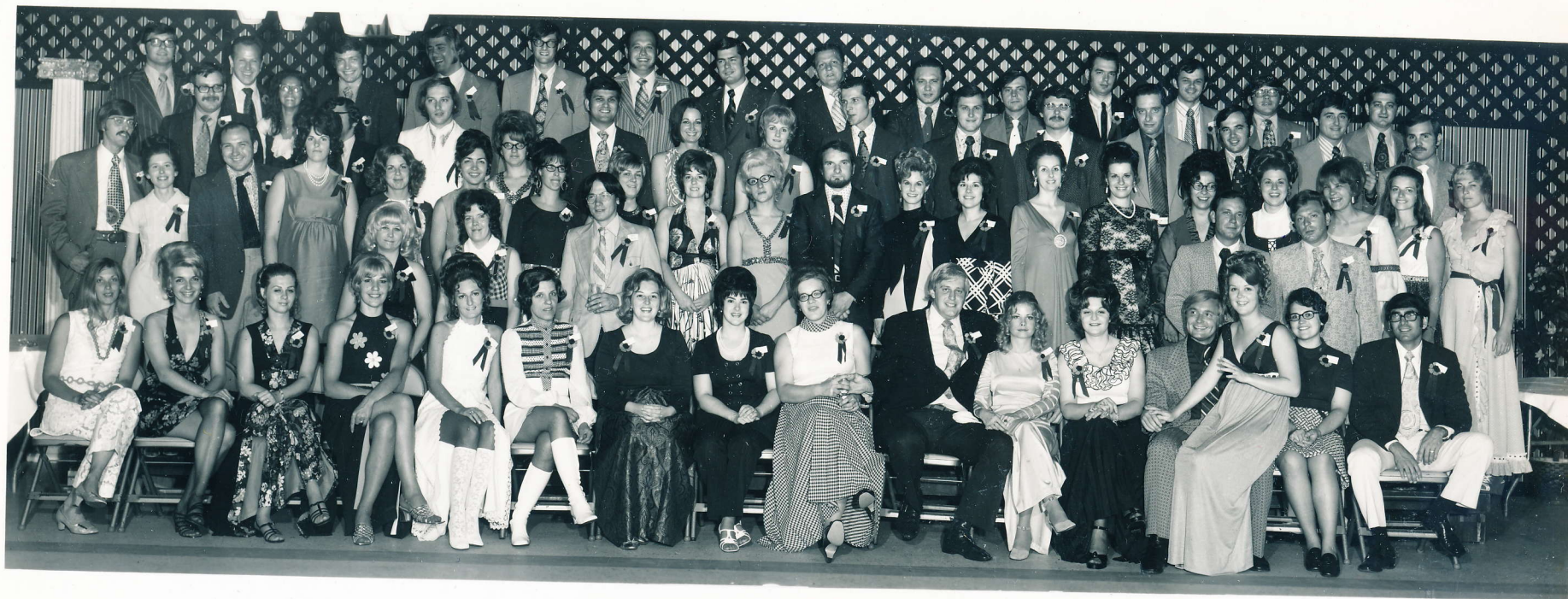
ALWAYS
FOUND AN
EXCUSE
TO HAVE
A PARTY



1957







CLASS OF 1962

GARFIELD HEIGHTS HIGH SCHOOL

JULY, 15, 1972



God Bless Our Class of "62"

The time has come to write
one more;
As we have done 2 times before -
to share some memories of
bygone years...

Filled with laughter, challenge and
tears.

Wishes may have kept some of
us apart,
But not the feelings in our
heart.

The comradery we felt 25 years
ago

Are like golden embers - still alive.
It's great to know that we
belong

To a class that stayed as strong
to keep uniting us in the way that
we do.

God Bless Our Class of "62"!

D.B.J.

© 1987

Robert M. Howe



Historical Facts of Maple Leaf School

Maple Leaf School got its name from a maple tree which grew near the site of the original one-room building.

Three one-room schools have stood, at different times, near the maple tree. The last one-room school had to be razed in 1953.

The finely-cut, dark red bricks made the one-room school the show place of the countryside when it was dedicated in 1907.

At one time, only 13 students attended the eight grades of the little red-brick school. South Newburgh became Garfield Heights and Maple Leaf School grew until it had more than 100 students in six grades. The two other grades had to be moved to the high school. It became necessary to build a new six-room school in 1926.

The present Maple Leaf School consists of three sections which were constructed at different times. The east wing was completed in 1926. Its chief features were six classrooms, hardwood floors and quarried corridor floors. The north wing was dedicated in March 1950 and the south wing in spring of 1953.

